

Penthouse

Luxury 1 Br Apartment Imperial Avenue Downtown

Südafrika, Gauteng, Johannesburg, Burj Khalifa Blvd, , ,

VERKAUFSPREIS

\$ 1555000.00

🏠 876 qft 🛏️ 0 Zimmer 🛏️ 1 Schlafzimmer 🚿 2 Badezimmer

🏗️ 2 Etagen 📐 2 qft Grundstücksfläche 🅇 2 Autostellplätze



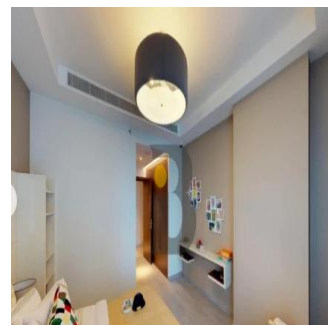
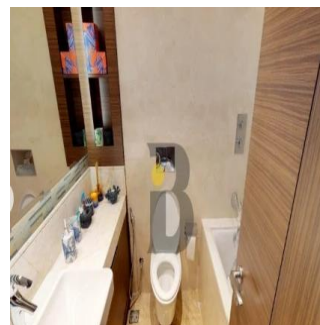
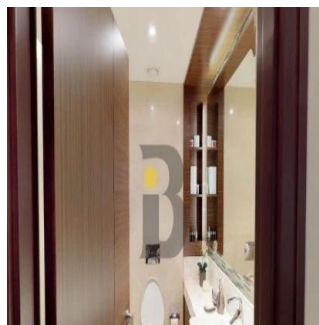
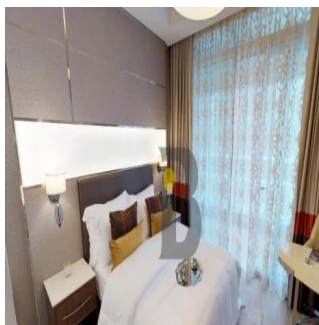
New Agent Happy

New User To Company Test

, United States - Ortszeit



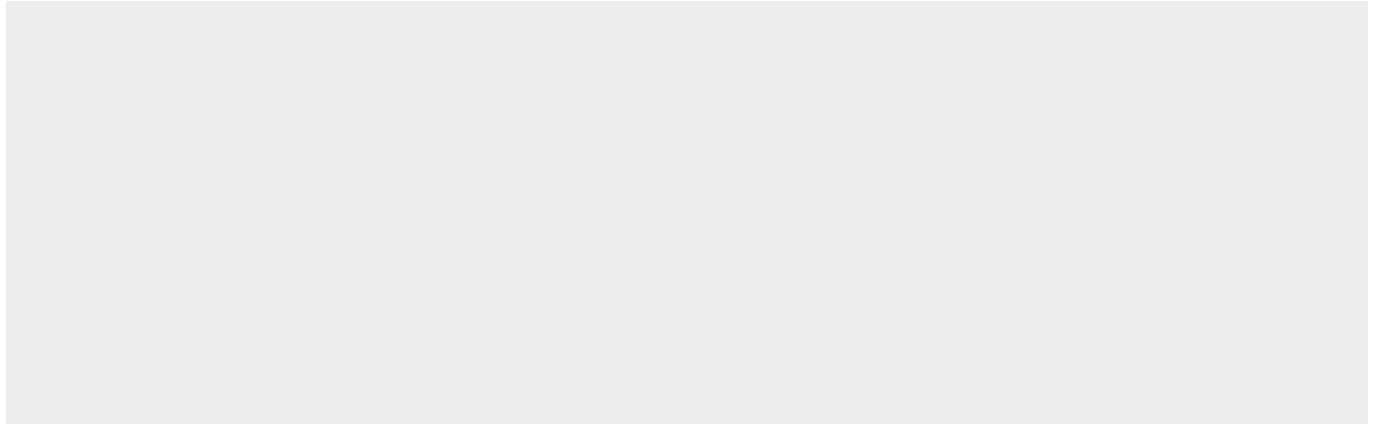
54 23534346



1 Bed apartment High rise , Burj Khalifa view & canal view High quality interior finishing & flooring Fully fitted kitchen with white goods Fully fitted wardrobes Floor to ceiling glass windows for downtown view Good size washrooms Big balcony car parking Infinity swimming pool Gym, Jacuzzi

Verfügbar Von: 01.01.1970

Etage: 4 Etagen: 4 Baujahr: 2017 Pkw-Stellplätze: 4 Baujahr: 2017 Typ: Büro



Imperial Avenue Downtown the most luxurious project in Burj Khalifa vicinity. Developer Shapoorji properties.

Ausstattung

ID Eigenschaft ID

Ausseneinrichtung