








Penthouse

# Convenient Location And Elegantly Designed 2 Bedroom Apartment In The North Sydney

Vereinigte Arabische Emirate, Dubai, Dubai, Miller St, , 2060,


-  85 qm
-  4 Zimmer
-  2 Schlafzimmer
-  2 Badezimmer
-  2 Etagen
-  2 qm Grundstücksfläche
-  2 Autostellplätze

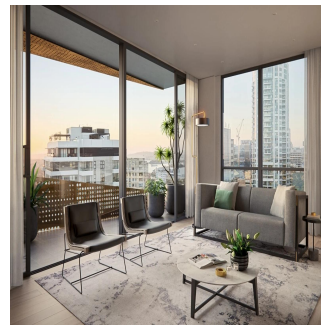
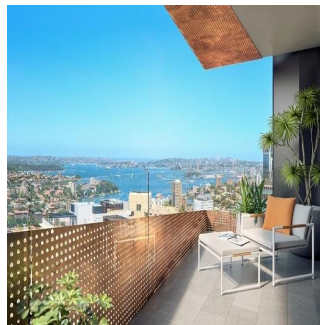


**Jay Lee**

Pw Realty

Sydney, Australia - Ortszeit

 +61 450 048 978



This elegantly designed apartment is situated in the heart of North Sydney, with only minutes walk to all amenities, cafés, restaurants, shops, presitge schools and public transport. This is a great opportunity for investors or first home buyers! Property features: \* North facing apartment with an internal size of 85sqm \* Two bedrooms, both with built-in wardrobes, master with an en-suite \* Elegantly designed throughout with luxury finishing touches \* Spacious combined living and dining room leading to a private balcony \* Breathtaking view of the Sydney Harbour from the open entertainments/ rooftop area \* Free gym membership for residents \* One secure parking \* Internal laundry Location: \* Future Metro station (Victoria Cross) across the street \* Greenwood Plaza is only 600m away \* 600m to North Sydney train station, only 10 min travel to CBD,15min to Chatswood, 20 min to Manly Beach \* 950m to North Sydney Boys High School \* 900m to North Sydney Girls High School \* Bus stop downstairs to Dee Why and CBD \* Walking distanct to restaurants and cafes \* Surrounded by activites all around year round with North Sydney Olympic Pool, Luna Park a short drive to Taronga Zoo FEATURES Air Conditioning, Built-In Wardrobes, Close to Transport, Close to Shops, Intercom, Close to Schools, Water Views, City Views, Lift Installed

Verf?gbar Von: 13.07.2019

Etage: 4    Etagen: 4    Baujahr: 2017    Pkw-Stellpl?tze: 4    Baujahr: 2017    Typ: Büro



## Ausstattung

ID                                      Eigenschaft ID

## Ausseneinrichtung