

Penthouse

The Azure

, , 8005,

qm

Zimmer

Schlafzimmer

Badezimmer

Etagen

qm
Grundstücksfläche

Autostellplätze



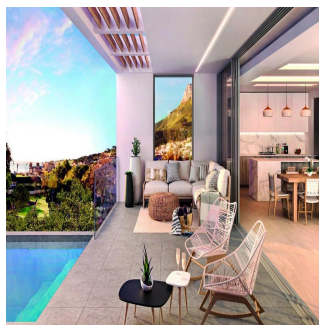
David Sedgwick

Horizon Capital Residential

Cape Town, South Africa - Ortszeit



+27 072 385 4386



The four residences are works of contemporary architecture, integrated into their surroundings through the use of natural materials and simple primal forms. As homes in one of the country's prime seaside locations, they are designed to combine simplicity and sophistication, relaxation and urbanity. With a strong flow between the inside and outside, the homes are connected to magnificent views on all sides. At the heart of each building is a green space – either a water-wise garden or courtyard – that continues nature's presence into the interior of each residence.

Verfügbar Von: 02.05.2019

Etage: 4

Etagen: 4

Baujahr: 2017

Pkw-Stellplätze: 4

Baujahr: 2017

Typ: Büro



Nestled between Lion's Head, The Twelve Apostles and Camps Bay Beach, The Azure offers a sophisticated and relaxed lifestyle with contemporary yet timeless design. Four landmark residences in the heart of Camps Bay Village, just 150m from the beach.

Ausstattung

ID Eigenschaft ID

Ausseneinrichtung