








Penthouse

## Jadescape Luxury Apartments For Sale

Hong Kong, Hong Kong Island, Central, Shunfu Rd, , 570311,

 107 qm    
  7 Zimmer    
  5 Schlafzimmer    
  2 Badezimmer  
 2 Etagen    
 2 qm  
 Grundstücksfläche    
 2 Autostellplätze



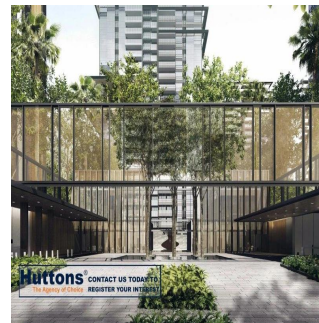
**Maureen Neo**

Hutton

Singapore, Singapore - Ortszeit



+65 9817 0028



Inspired by the edgy lifestyle of Singapore, a new residential complex called JadeScape is being developed at Shunfu Road in District 20. This project when completed will boast of fully furnished apartments tailored to the highest standard. The development is by the renowned Qingjian Realty. It will have seven residential blocks of 21 to 23 stories. The total size of the project is 36,985.70 sq m with a GFA of 103,559.96 sq m. There will be 1,206 luxury apartments ranging from a single bedroom to five bedroom apartments and two penthouses in each block. JadeScape will give its residents an opportunity to experience the serenity of nature without losing touch with modern city life. Some important features of this project are: Designed by the renowned award winning Architect Paul Noritaka Tange, Tange Associates. Located in the centre of the city with easy access to four MRT lines: Circle Line, North-South Line, Thomson East Coast Line and the proposed Cross Island line. A stone throw away from the MacRitchie Reservoir Park and Bishan-Ang Mo Kio Park. Cutting edge smart home features to provide residents with a secure and comfortable living experience. Wide range of options including 1,2,3,4,5 bedrooms or a penthouse In the close vicinity of several renowned schools. Great potential for rental yield thanks to its location and features. Completion Year: 2023 Address 2,4,6,8,10,12,16 Shunfu Road, Singapore 570311

Verfügbar Von: 09.08.2019

Etage: 4

Etagen: 4

Baujahr: 2017

Pkw-Stellpl?tze: 4

Baujahr: 2017

Typ: Büro



## Ausstattung

ID

Eigenschaft ID

## Ausseneinrichtung