

Penthouse

Freehold Mixed Development At The Rise

Vereinigte Arabische Emirate, Dubai, Dubai, Oxley Rise, , ,

1195 qft 12 Zimmer 6 Schlafzimmer 6 Badezimmer

6 Etagen 6 qft Grundstücksfläche 6 Autostellplätze



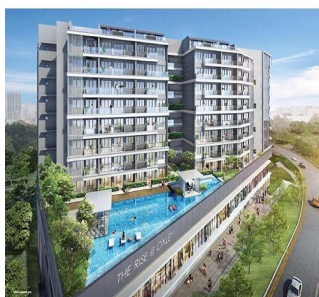
Alex Han

Alex Han Properties

Singapore, Singapore - Ortszeit



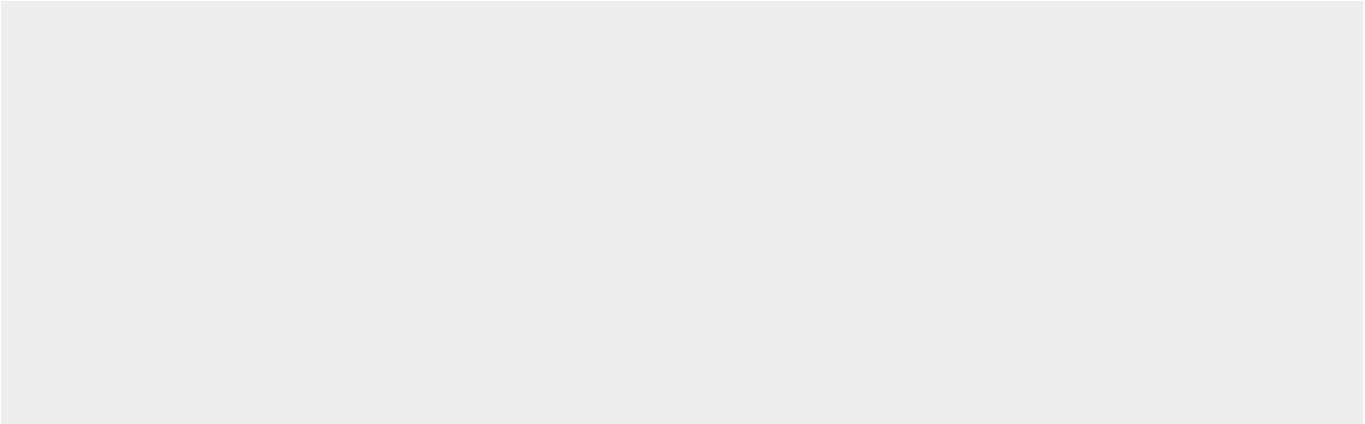
+65 9338 8407



The Rise at Oxley is a freehold mixed development located at 71 Oxley Rise, Singapore 238698 in District 09. This development comprises of 29 commercial units and 120 residential units, with layouts ranging from one to four bedroom and penthouses. TOP is estimated to be obtained in 2022.

Verfügbar Von: 07.08.2019

Etage: 4 Etagen: 4 Baujahr: 2017 Pkw-Stellplätze: 4 Baujahr: 2017 Typ: Büro



At The Rise at Oxley, you are only a short walking distance away from Somerset MRT station and the upcoming Fort Canning MRT station, making it easily accessible for all. The Rise @ Oxley is also located just minutes' walk away from the hustle and bustle of Singapore's world renowned shopping district Orchard Road. Residents are able to enjoy a wide array of amenities from major shopping malls like ION Orchard, 313 @ Somerset and many more. If you feel like getting away from it all, simply head down to the nearby Fort Canning Park to embrace serenity in the city. Several prestigious educational institutions are also situated within close proximity to The Rise @ Oxley. These would include Singapore Management University, Chatsworth International School and River Valley Primary School. At The Rise @ Oxley, there is easy accessibility to major expressways such as Central Expressway (CTE), Ayer Rajah Expressway (AYE) and East Coast Parkway (ECP), allowing residents to travel to other parts of Singapore without much hassle.

Ausstattung

ID	Eigenschaft ID
----	----------------

Ausseneinrichtung