

Penthouse

Corner Terrace For Sale In Siglap Vicinity

Hongkong, Hong Kong Island, Pokfulam, Siglap Rd, , ,

VERKAUFSPREIS

\$ 3486000.00

🏠 3100 qft 🛏️ 10 Zimmer 🛏️ 6 Schlafzimmer 🚿 4 Badezimmer

🏗️ 4 Etagen 📏 4 qft Grundstücksfläche 🚗 4 Autostellplätze



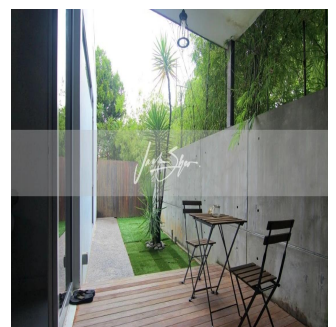
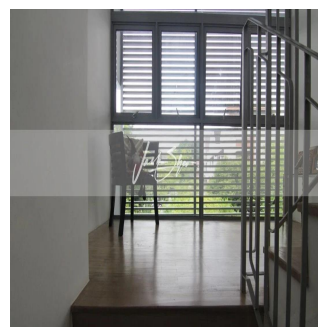
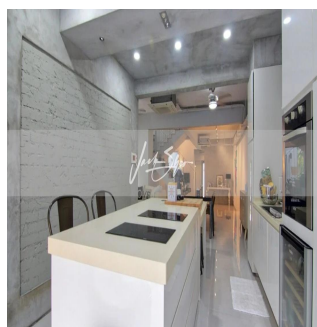
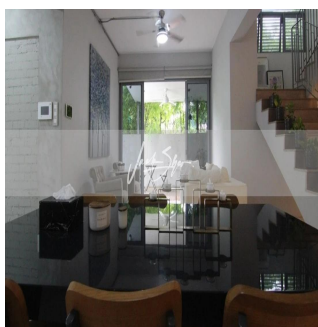
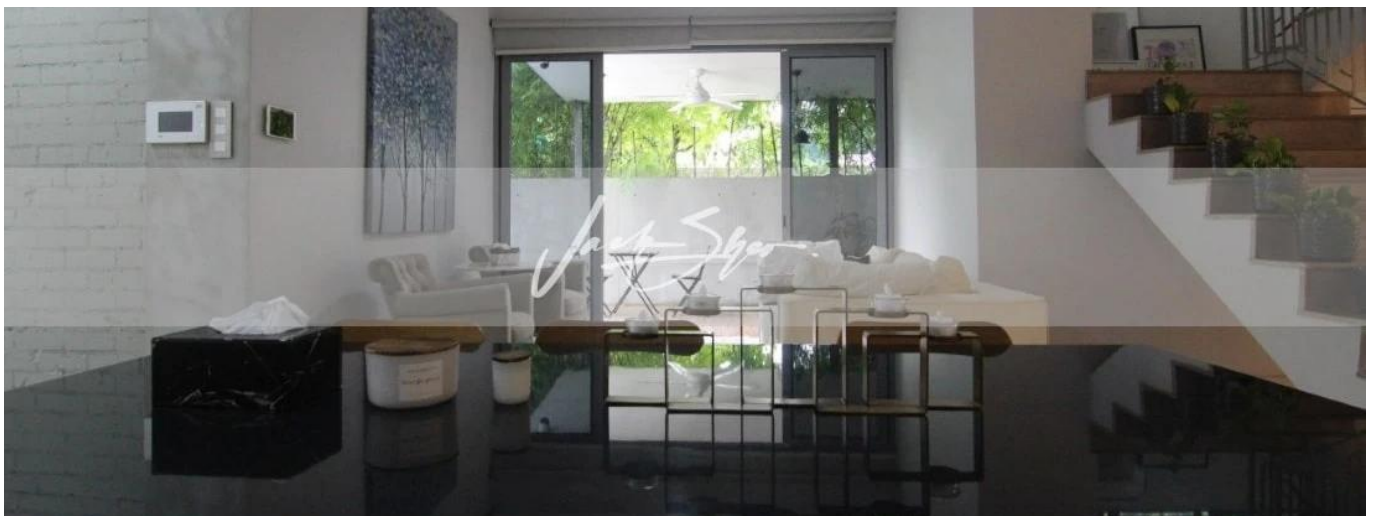
Jack Sheo

Jack Sheo

Singapore, Singapore - Ortszeit



+65 93378483



This is a beautiful and modern 3 storey corner terrace in the Siglap vicinity. There is an abundance of amenities within easy reach from this house. The house has an almost north-south orientation and has a double volume living area with an open concept kitchen. This is the current house configuration, 1st floor, :: parks two cars :: split living/dining :: one bedroom :: one bathroom :: open concept kitchen :: backyard :: garden :: helper's room + helper's toilet 2nd floor, :: family area :: two common bedrooms (shared bathroom) 3rd floor, :: two common bedrooms (shared bathroom) :: one ensuite master bedroom

Verfügbar Von: 04.08.2019

Etage: 4 Etagen: 4 Baujahr: 2017 Pkw-Stellplätze: 4 Baujahr: 2017 Typ: Büro

